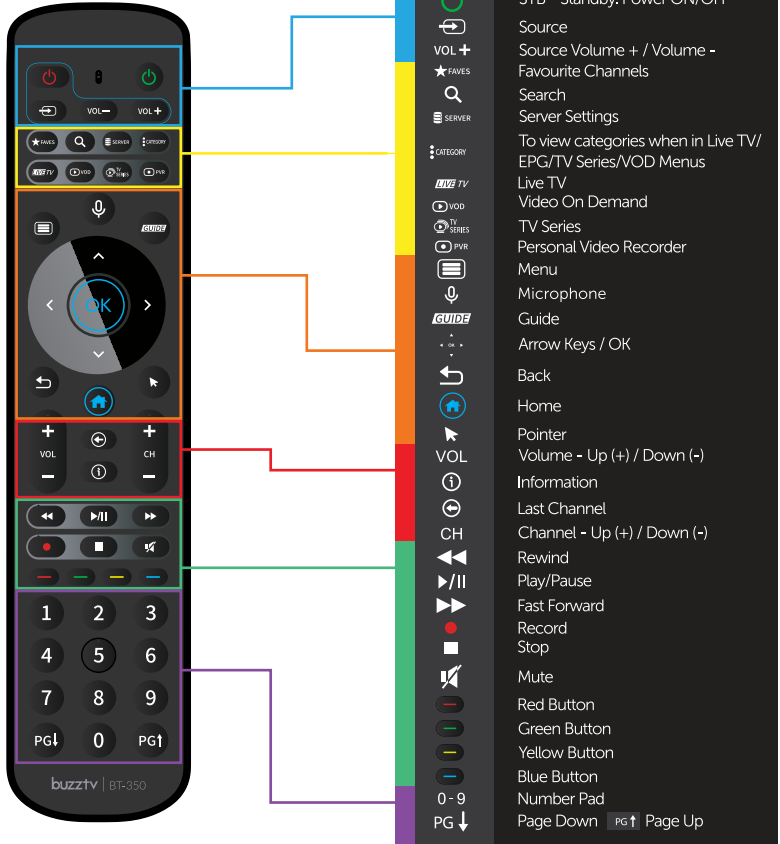


1 BT-350 Remote



2 BT-350 Remote - Learning Function

The learning function on the BT-350 remote is used to control your TV. You will be able to control: Power ON/OFF, Volume and Input Source. To do this you will need the factory remote control for your TV.



1. On the BT-350, press and hold the TV POWER + TV SOURCE for 3 seconds. Once the blue light turns on, release the buttons.

2. Press the learning key you would like to program (TV POWER/ SOURCE/ TV VOL+/ TV VOL-) and the blue light will start flashing. The flashing blue light indicates the BT-350 is in learning mode.



3. Align your TV Remote and the BT-350 so that the front transmitters are pointing at each other. They should be within 1 inch or 3 cm of each other.

4. Press the button that you want to learn on the original remote. After receiving a learning function successfully, the red light on the BT- 350 will blink 4 times.

5. To learn other keys, repeat Steps 2-4

6. After entering the learning mode, you can exit the learning mode by short pressing the "TV POWER + TV SOURCE" keys.

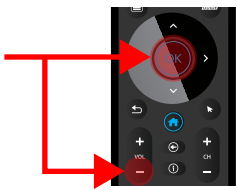
7. To clear the learning function memory Long press the "OK+Back" buttons for 3 seconds The red light flashes 3 times to clear the learning data



3 BT-350 Remote - Bluetooth Pairing

1. On your BuzzTV device, navigate to Settings > Remotes & Accessories > toggle Bluetooth to ON. Then choose: Add Accessory.

2. On the BT-350, press and hold the VOL - & the OK Button for 3 seconds. Once the red light starts flashing, release the buttons.



3. Select "BuzzTV BT-350" on your BuzzTV Device.

4. You are now Bluetooth Paired. You can confirm this by looking for "BuzzTV BT-350" under the Remotes and Accessories Menu.

Note:

If you do not select the key within 15 seconds after entering the learning state, it will automatically exit the learning state.

Please note not all TVs are compatible with source pairing

CEC settings to support the BT-350, your TV & your BuzzTV Box

If you were successful in TV source pairing the BT-350 to your TV then you need to make sure the CEC settings on both the TV and your BuzzTV Box are enabled and in some cases in the correct HDMI port on the TV, refer to your TV manual if needed. (Initially set to ON)

4 Voice Control

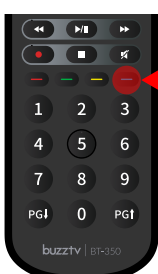


To use Voice control press the microphone button & say a command

*Only supported on certain models**

5 Backlight

To turn on or off the backlight press and hold the blue button for 3 seconds , the red LED will blink twice



Press and hold the **blue button** for 3 seconds

6 Warranty Information

For warranty information and registration, please visit: www.buzztv.com/register

www.buzztv.com/support
cs@buzztv.com